

Figure S2

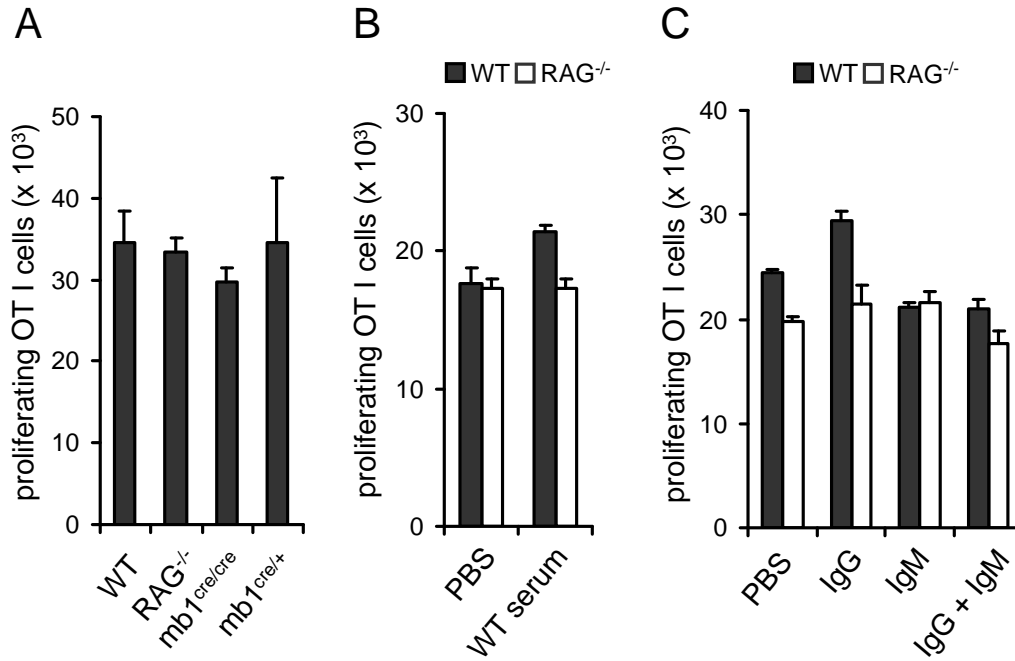


Fig. S2. Presentation of OVA₂₅₇₋₂₆₄ peptide is not altered in splenic cDC.

(A) Splenic cDC from WT, RAG^{-/-}, mb1^{cre/cre} and mb1^{cre/+} mice were loaded with indicated concentrations of SIINFEKL (OVA₂₅₇₋₂₆₄) peptide and incubated with CFSE-labeled OT I cells for 1.5 days. **(B)** WT and RAG^{-/-} mice were injected three times within 21 days i.v. with serum collected from WT and RAG^{-/-} mice. DC were sorted and loaded with indicated concentrations of SIINFEKL (OVA₂₅₇₋₂₆₄) peptide, incubated with CFSE-labeled OT I cells for 1.5 days. **(C)** WT and RAG^{-/-} mice were injected twice within 21 days i.v. with murine IgG (7.5 µg/mouse) and/or murine IgM (7.5 µg/mouse). Next, cDC were sorted and loaded with indicated concentrations of SIINFEKL (OVA₂₅₇₋₂₆₄) peptide, incubated with CFSE-labeled OT I cells for 1.5 days. The proliferative response of T cells was enumerated by flow cytometry. Numbers of proliferating cells are shown (mean +SEM). Data are representative of two or three independent experiments with minimum three mice per group.