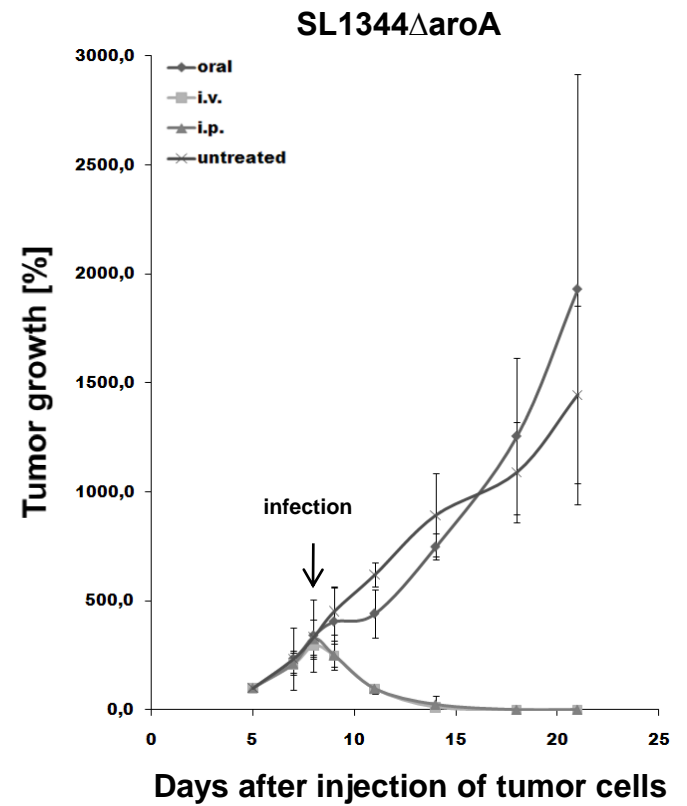
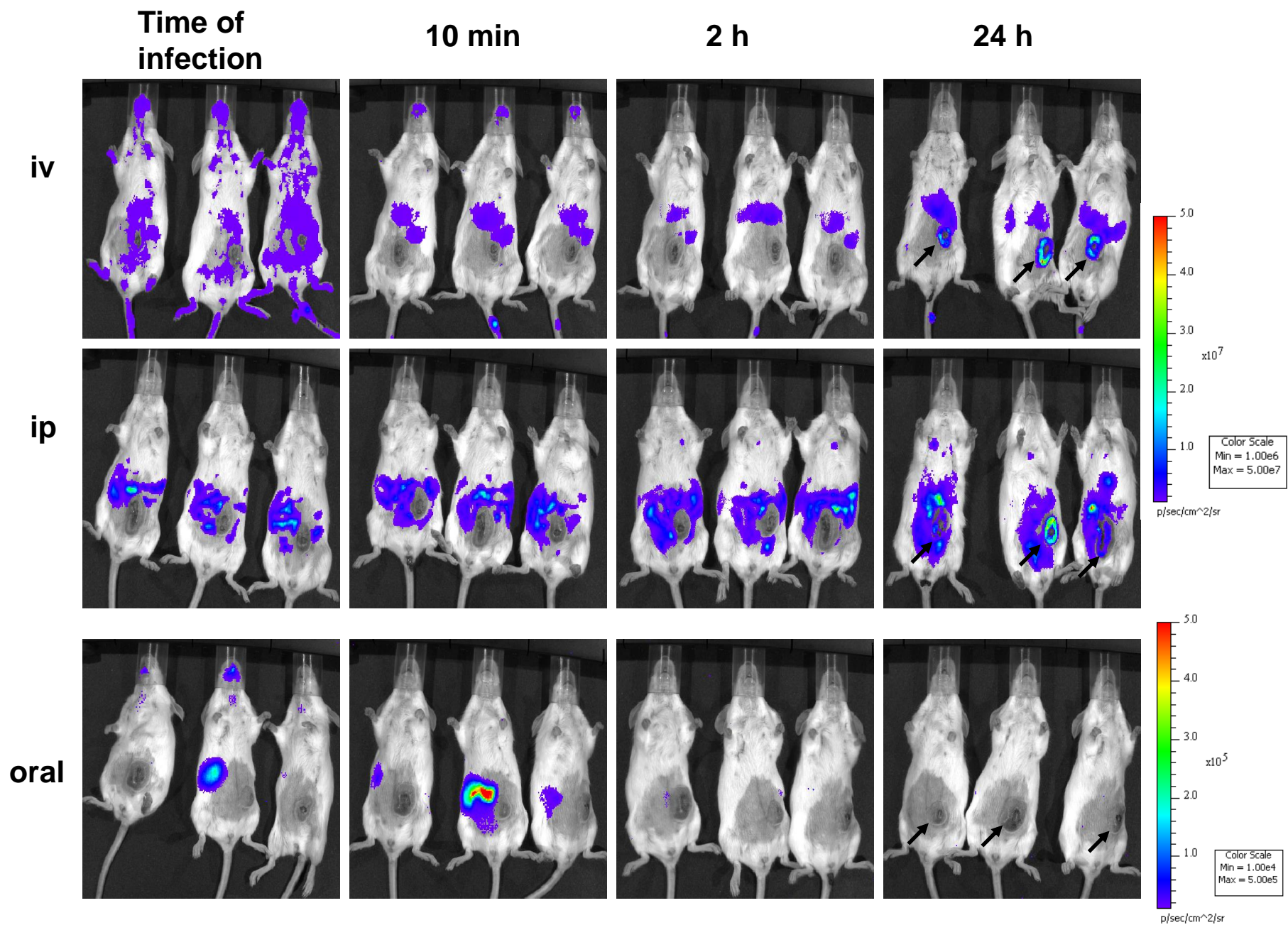


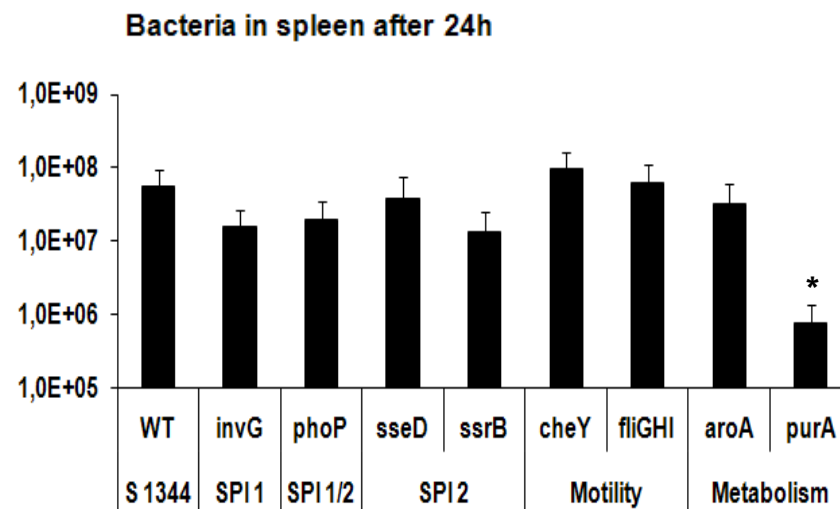
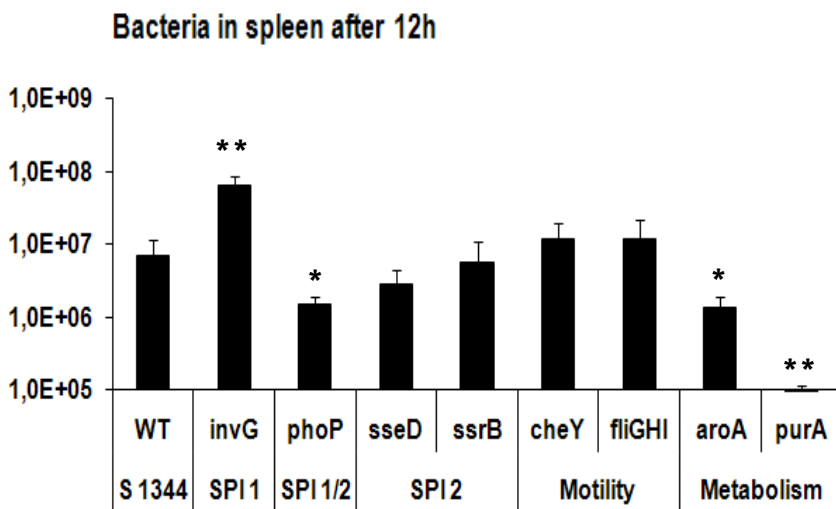
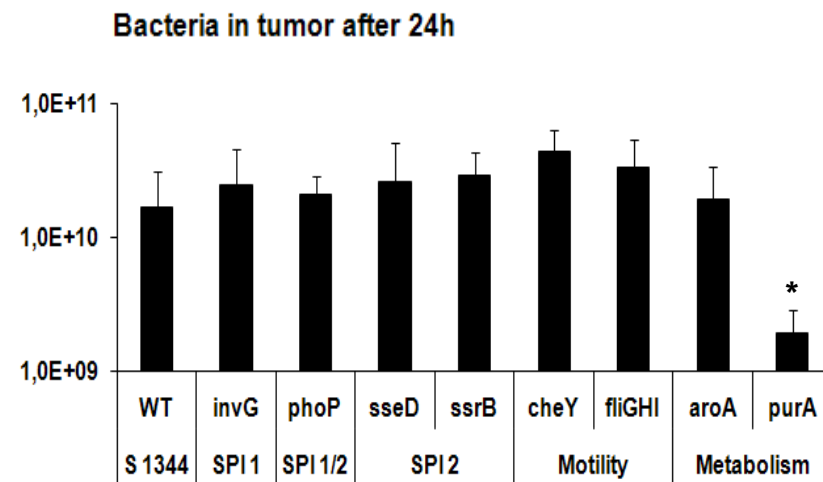
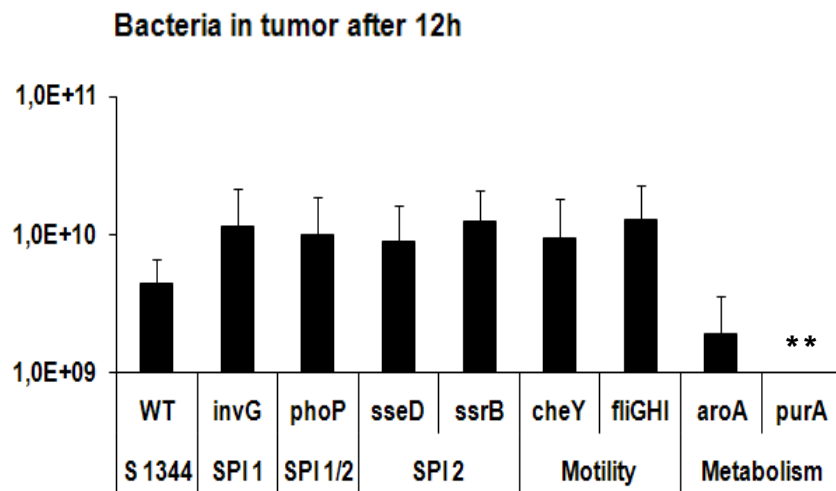
**Fig. 1.** Colonization of tumor, spleen and liver after iv, ip and oral application of SL1344  $\Delta$ aroA. Bars show the mean of 5 mice per group  $\pm$  SDM.



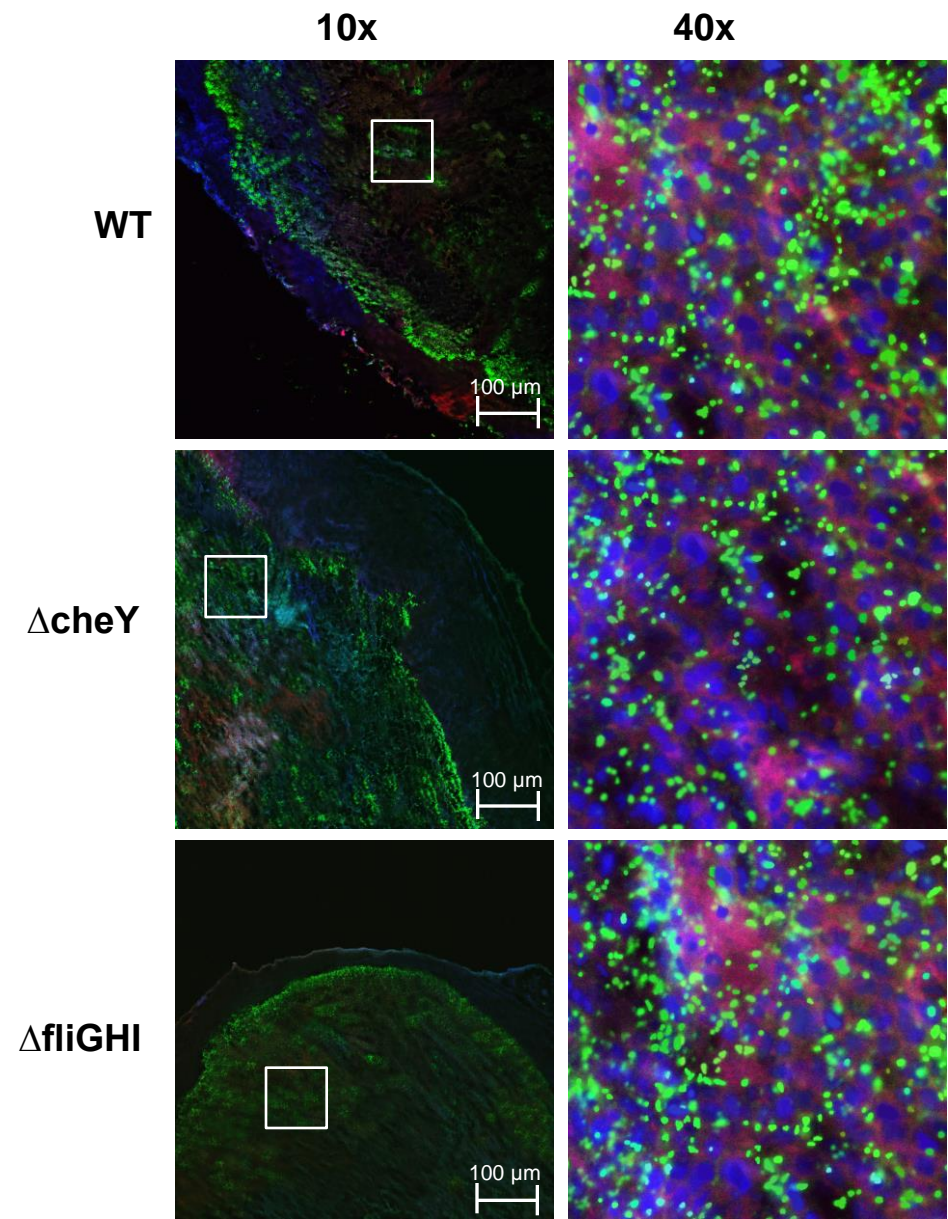
**Fig. 2.** Therapeutic effect of the colonization of tumor-bearing mice by SL1344 $\Delta$ aroA. The infection was carried out 9 days after the administration of tumor cells and the development is given as percent of tumor size at day 5. The values shown here are mean values of 5 mice per group  $\pm$  SDM.



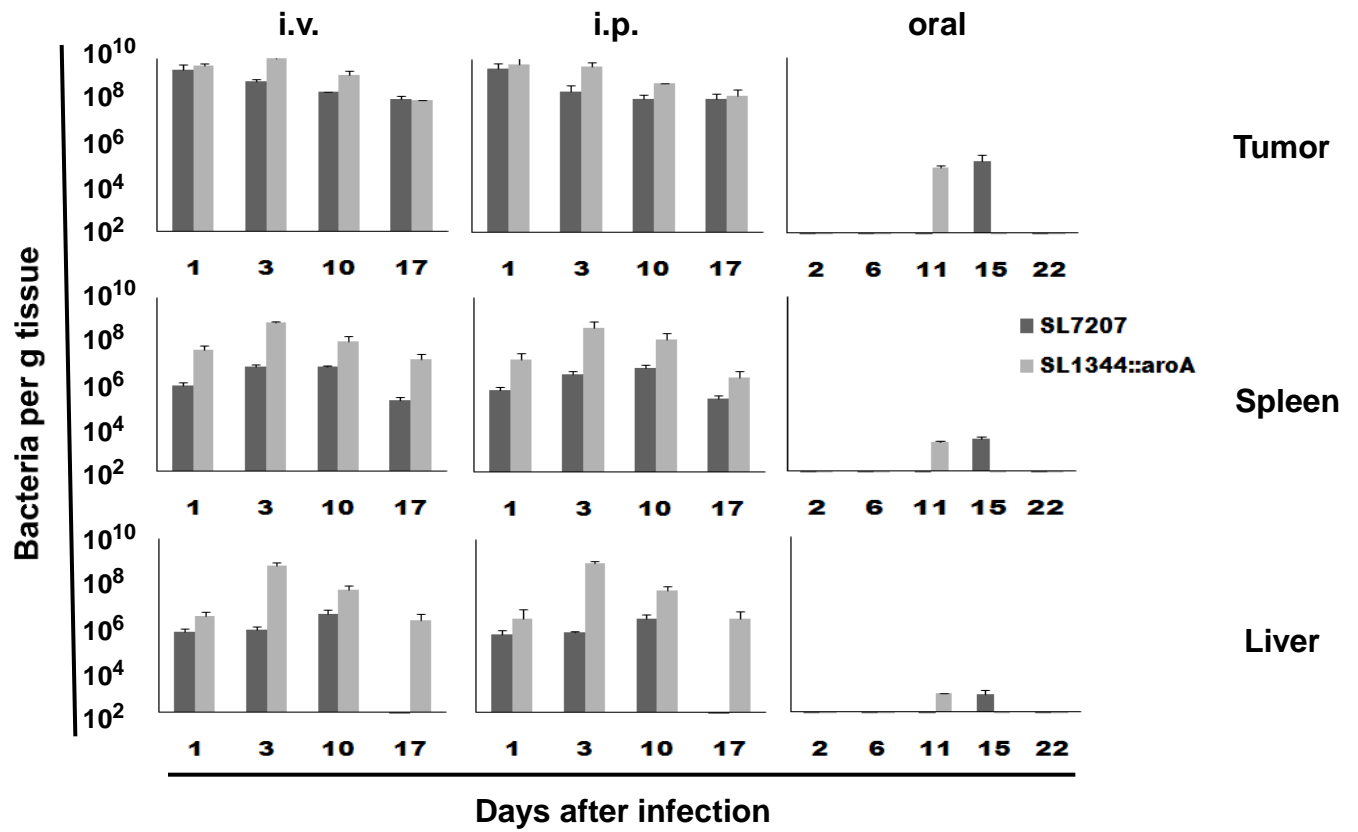
**Fig. 3.** Colonization of tumor-bearing mice infected with SL7207/*lux*, carrying chromosomally integrated *lux*, after iv, ip or oral application. Note that the scale is different for iv / ip and oral infection. Position of tumors are indicated by black arrows.



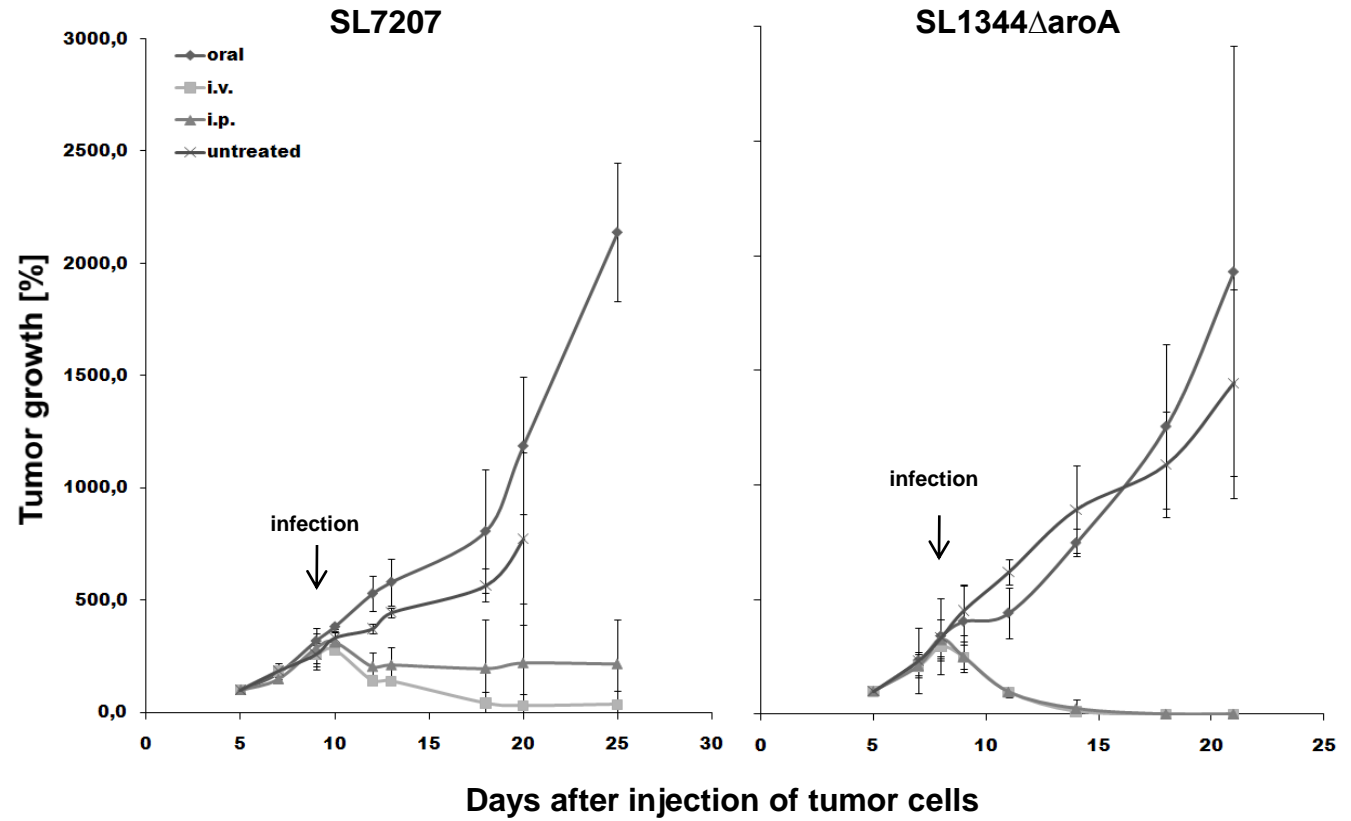
**Fig. 4.** Colonization of tumor-bearing mice by mutants of SL1344 12 and 24 h after iv infection. Tumor and spleen were tested for the number of bacteria per g of tissue. Bars show mean value of 5 mice per group  $\pm$  SDM. Statistical significance, calculated via Student's t-test, is indicated by asterisks; \*  $p < 0.05$ ; \*\*  $p < 0.01$ ; \*\*\*  $p < 0.005$ .



**Fig. 5.** Immune histology of tumors colonized by WT SL1344, immobile mutants ( $\Delta fliGHI$ ) or a mutant strain, unable to react to chemotactic gradients ( $\Delta cheY$ ). 10  $\mu$ m cryo sections were stained for nuclei (blue), actin (red) and *S. typhimurium* (green). Confocal images show overviews (10x) and 40x magnifications of the area in boxes.



**Supl. Fig. 1.** Comparison of the colonization of tumor, spleen and liver after iv, ip and oral application. Cfu per g tissue were compared after infection with SL7207 and SL1344Δ*aroA*.



**Supl. Fig. 2.** Comparison of the therapeutic effect of SL7207 and SL1344 $\Delta$ aroA to tumor-bearing mice. The infection was carried out 9 days after the administration of tumor cells and the development is given as percent of tumor size at day 5.