

Kletting et al.:

Co-culture of Human Alveolar Epithelial (hAELVi) and Macrophage (THP-1) Cell Lines

Supplementary Data

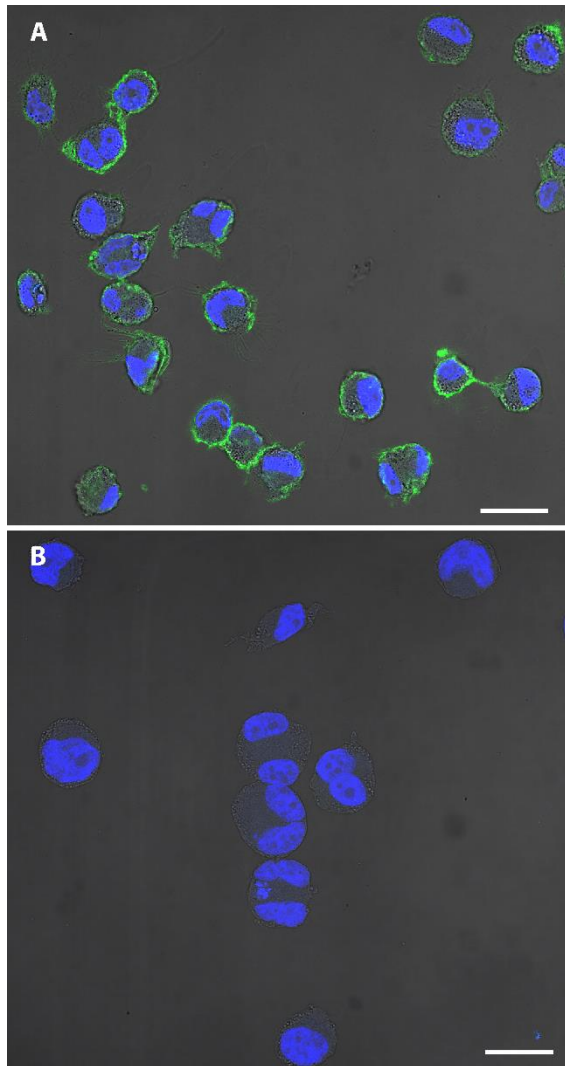


Fig. S1: Confocal laser scanning microscopy of PMA-differentiated THP-1 cells

(A) Expression of the macrophage marker CD11b in the membrane of THP-1 macrophages, (B) negative expression of the monocyte marker CD14 in THP-1 macrophages. CD11b: green; nuclei were counterstained with DAPI (blue). Bar: 25 μ m.



This is an Open Access article distributed under the terms of the Creative Commons Attribution 4.0 International license (<http://creativecommons.org/licenses/by/4.0/>), which permits unrestricted use, distribution and reproduction in any medium, provided the original work is appropriately cited.

doi:10.14573/altex.1607191s